

JUDY, OR THE LONDON SERIO-COMIC JOURNAL (PUBLISHED 1867 TO 1910)

THIS JOURNAL WAS CREATED AS A POLITICALLY CONSERVATIVE COMPETITOR TO THE POPULAR PUNCH. IT WAS EDITED BY C. H. ROSS AND FEATURED ILLUSTRATED COMIC SKITS, SATIRE, LIGHT VERSE, AND CARICATURES.

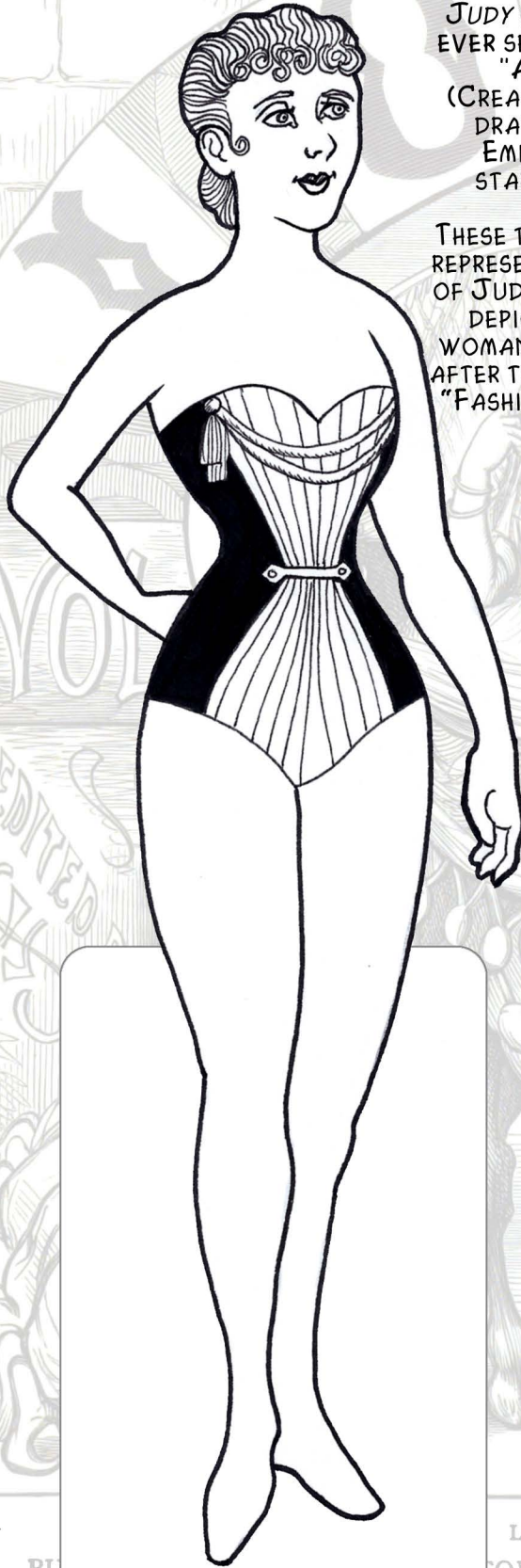
JUDY BOASTS THE FIRST EVER SERIAL COMIC STRIP, "ALLY SLOPER" (CREATED BY ROSS, BUT DRAWN BY HIS WIFE EMILIE DE TESSIER STARTING IN 1869).

THESE TWO DOLLS DO NOT REPRESENT THE CHARACTER OF JUDY (WHO IS ALWAYS DEPICTED AS AN OLD WOMAN), BUT ARE DRAWN AFTER THE MODELS FOR THE "FASHION OF THE WEEK".

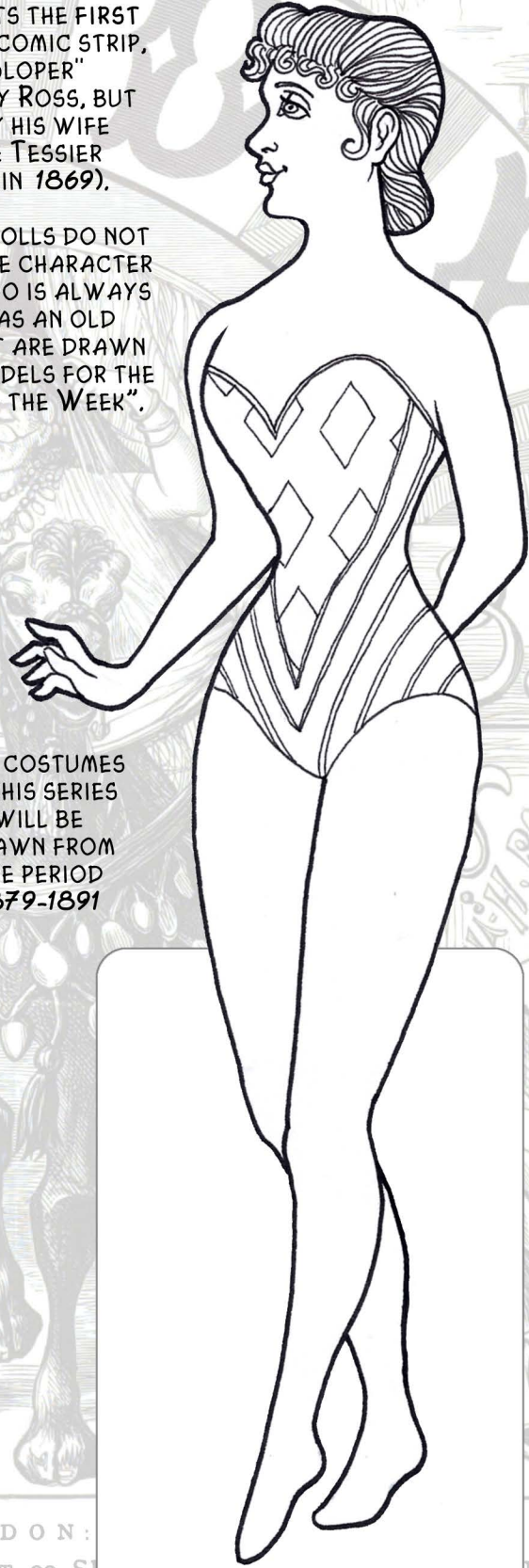
THE COSTUMES IN THIS SERIES WILL BE DRAWN FROM THE PERIOD 1879-1891

FOR PERSONAL AMUSEMENT ONLY; DO NOT REPRODUCE FOR PROFIT

© 2015 ~ ELENA CARRILLO ~ POPCULTURE.LOOKINGLAND.COM



JUDY No. 1



JUDY No. 2

LONDON:
PUBLISHED BY C. H. ROSS, AT 99 ST. MARK LANE,
1884.

E.C.